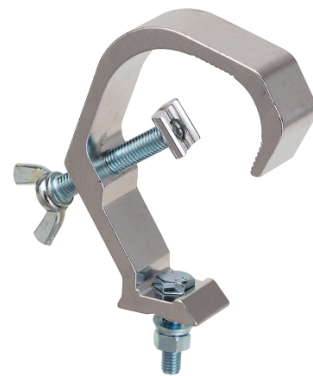


SLH30-100A

30-51 mm Aluminum Clamp - 28 mm width

Clamp for trusses with sections between 38 and 51 mm.
Maximum load 100kg



PRODUCT DETAILS

Key features

Width	28 mm
Safe working load	100 kg
Fit tube Dimeter	Ø30-51 mm
Material	Aluminum Alloy 6061-T6
Accessories	M10x60 Wing bolt
Surface Treatment	Polishing
Color	Aluminum
Note	Claw at the end of bolt

Specifications