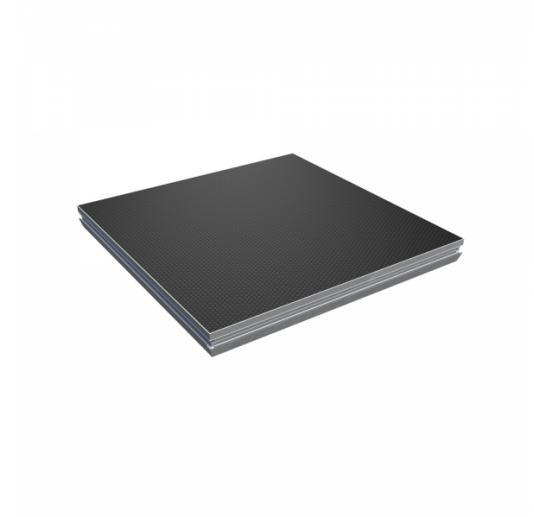


CL-SDP-1X1

Stage Platform 100 x 100 Cm

Robust, versatile and lightweight aluminum stage platform designed for the construction of stages and scaffolding. The construction materials also include outdoor plywood and anti-slip HEXA.



PRODUCT DETAILS

Key features

Robust, versatile and lightweight stage platform.

Made of aluminium, outdoor plywood and anti-slip HEXA.

Capacity	Loading according DIN 15921 - Vertical
-----------------	--

TÜV Rheinland certified

Specifications

Dimension (WxDxH)	1000 x 1000 x 89,5 mm
--------------------------	-----------------------

Weight	17,5 Kg
---------------	---------